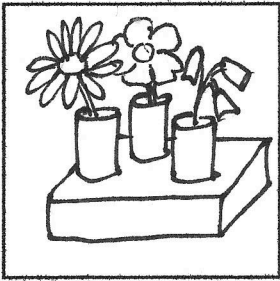


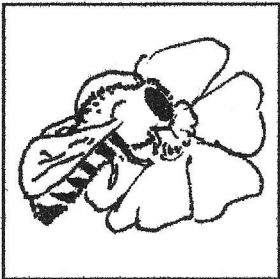
# Insects and flowers

Smell flowers to figure out how they attract insects.



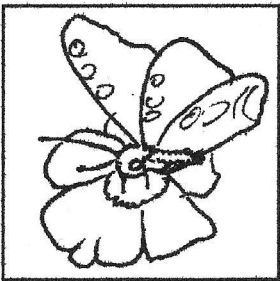
**Smell and look at the cut flowers.**

**Which ones would each of these insects be attracted to?**



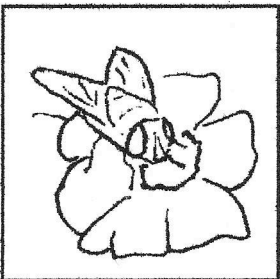
**Bee:**

**I like yellow, white, blue and purple flowers.  
I like flowers that smell sweet.**



**Butterfly:**

**I like all coloured flowers - and unlike most other insects, I can see red.  
I like flowers that smell sweet.**



**Fly:**

**I usually pollinate white, green, yellow or brown flowers.  
I like flowers that might smell funky to you - they have a strong smell that is not all sweet.**

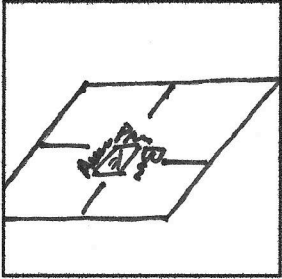
What's going on?

Each flower is adapted to attract one or more kinds of insects to it.

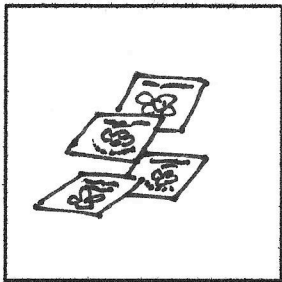
When the insects collect nectar to eat, they move pollen from one flower to another. The pollen fertilizes the flowers.

**Turn over for another activity**

Play bingo to find insects pollinating flowers in the garden.

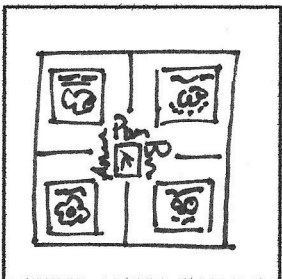


Pick up a bingo board.

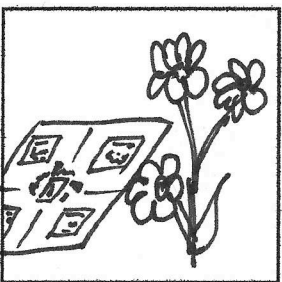


Choose 4 of the bingo picture cards.

Make sure different people in your group choose a different set of picture cards.



Glue each of your bingo picture cards to its own square of your bingo board.



Take your bingo boards into the garden.

Find the things on your bingo card.

First to find them all calls BINGO!